



MYCORRHIZAL INOCULANT

For indoor and outdoor agricultural crops; nursery and greenhouse; vineyard and orchard; and landscape and turf

Rhizophagus irregularis

Contains | A minimum of 2,000 viable spores/g

Packaging | 200 g and 1 kg bags

Storage | 24 months at 77 °F (25 °C) or less under non-humid conditions, in the original sealed packaging.



WETTABLE
POWDER

LALRISE MAX WP

Increase the vigor and growth of your plants

LALRISE® MAX WP is a powerful inoculant, formulated as a wettable powder, containing spores of a carefully selected and versatile endomycorrhiza strain.

Benefits

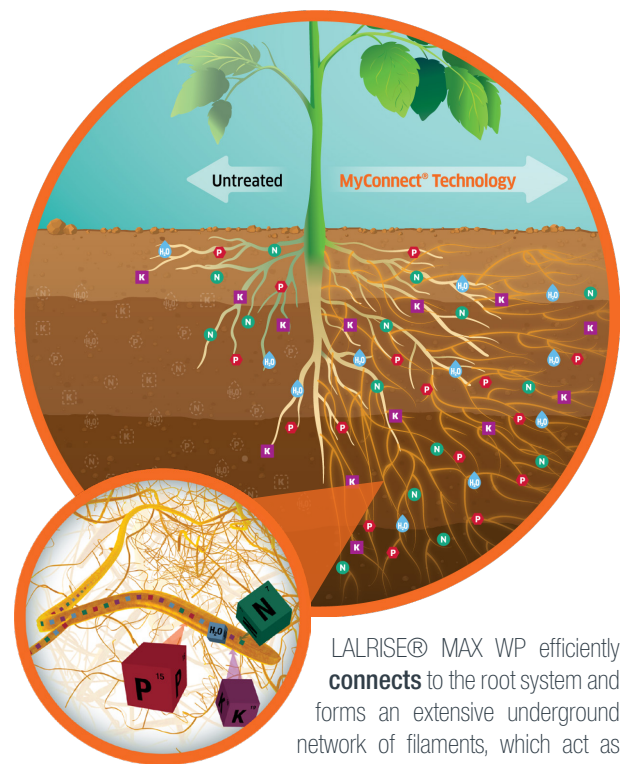
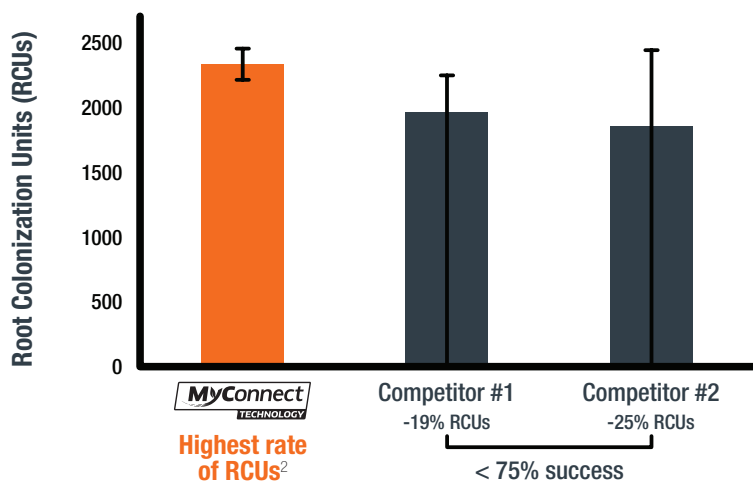
- Increases yields and growth
- Improves nutrients absorption capacity
- Increases tolerance to drought
- Maximizes plant survive rate
- Benefits transferable in crop rotation
- Can be used in organic practices



Made with MYCONNECT®

The MYCONNECT® Technology seal ensures compliance with quality standards from our unique mycorrhizae production system. MYCONNECT® uses a **proprietary yeast fraction, acting to enhance the efficacy of the mycorrhiza** active ingredient. It provides:

- Superior quality and efficiency
- More homogeneity and better diffusion of spores at the level of the root bulb
- Better shelf-life and no contamination
- Provides a higher rate of root colonization (RCUs)¹



LALRISE® MAX WP efficiently **connects** to the root system and forms an extensive underground network of filaments, which act as extensions reaching out for nutrients and water beyond the rhizosphere area.

Compatibility: For any mixing with chemical products, ask your distributor.

Conditions at applications: Optimal temperature between 50°F and 86°F (10°C and 30°C). Apply preferably to moist soils or growing media. For drier climates, it is recommended to irrigate enough after application to move the product below the soil surface. Avoid applications during high-temperature periods and on dry soils.

1. Successful colonization of roots is directly related to the level of performance of mycorrhizae and access to its benefits.
2. Repeated trials against other major producers of mycorrhiza in North America.